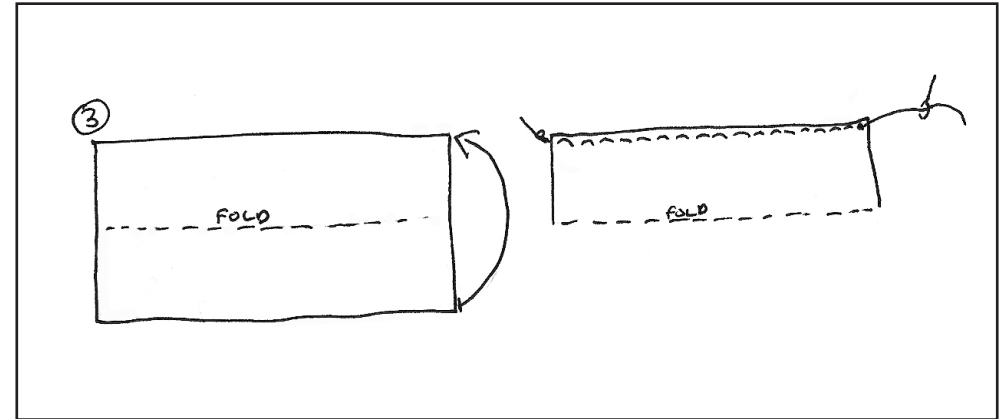
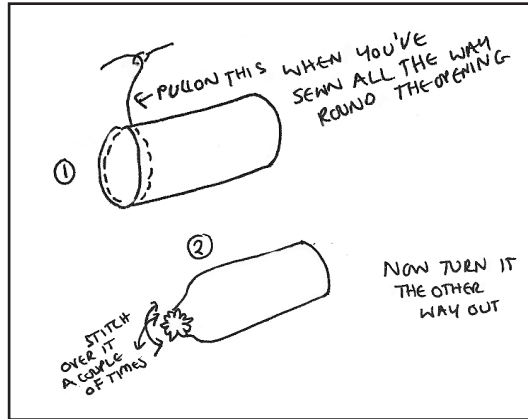
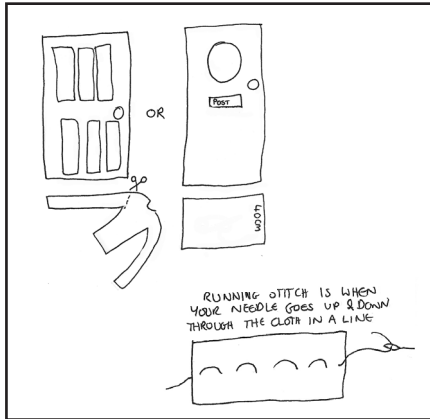


door snake

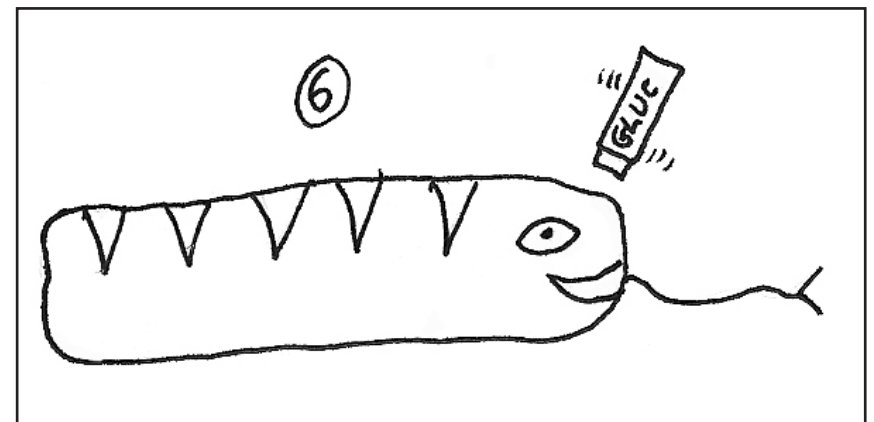
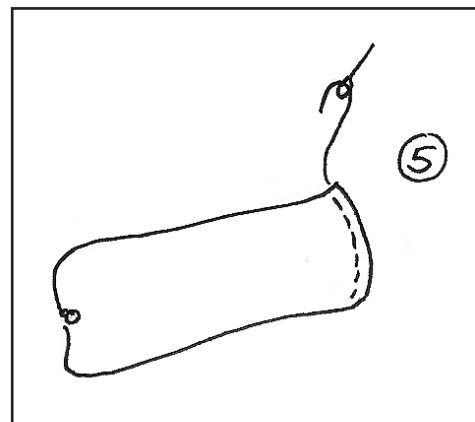
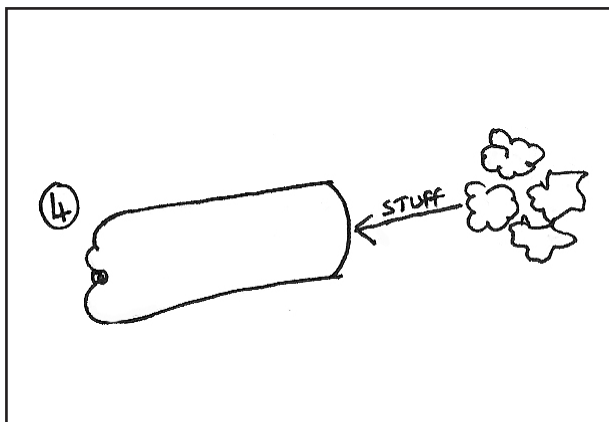
You will need: An old long sleeve or a piece of fabric; Old scraps of fabric in any condition for stuffing / old pillow innards or anything else that will make suitable stuffing material; Buttons, bits of felt etc for decorating your snake; Scissors; Needle and very strong thread, or some strong rubber bands; Glue.



Use an old long sleeve, or a piece of fabric the width of your door by about 40cm. If you have an old sleeve you will need to turn it inside out and sew a running stitch round one end...

...Then pull it tight, knot it and tie it firmly. You are aiming to close the end off as tightly as possible. It helps to oversew it a couple of times, or wrap two or three rubber bands around the end until it is securely fastened.

If you are using a piece of fabric, first fold it in half (along the door length) with the outward-facing sides together and sew along the edge to form a tube. Then sew one end shut as described in steps 1-2.



Turn your sleeve or tube the right way out and stuff it until it is fairly full. It shouldn't be bursting out – you want it to be squishy enough to be able to wedge it into the gap under your door.

Sew the other end shut or use rubber bands to hold it shut. Rubber bands will make a sticking out bit, if you sew it you should be able to fold the ends in.

Use scrap fabric, buttons etc to decorate your snake – if you don't fancy a snake how about decorating it to look like a sausage dog, or sewing polka dots onto it. Wedge it under your door or into your window frame to stop draughts coming in and heat going out!